

OCULAR

IQ Solar

7kW / 22kW

Version 2.0



Charging ahead, Powering tomorrow.

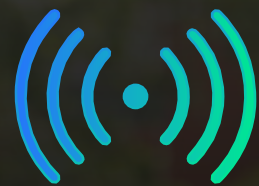
Welcome to the future of charging with the IQ Solar, our cutting-edge charging solution is designed to meet the needs of modern electric vehicle owners, offering versatility, efficiency, and convenience at their doorstep. The IQ Solar comes in both single-phase (7kW) and three-phase (22kW) configurations and is compatible with all electric vehicles in Australia.

The system comes with CT clamps to measure your solar production excess, which enables you to charge with green, free electricity from your solar panels, and protects your home from overloading. The inclusion of a 2.8-inch LCD screen not only provides peace of mind but also enhances functionality with RFID card compatibility. Additionally, there's the flexibility of opting for a socketed version that offers unparalleled ease of use.

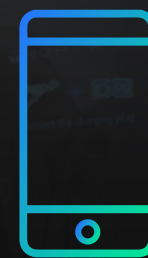
The IQ Solar has three different charging modes to suit your individual needs and solar production levels. Built to withstand the Australian elements, it comes with IP55 protection, ensuring reliable performance in any weather conditions. The unit's compact design makes it ideal for residential settings, allowing for easy installation and seamless integration into your home.



LCD Screen



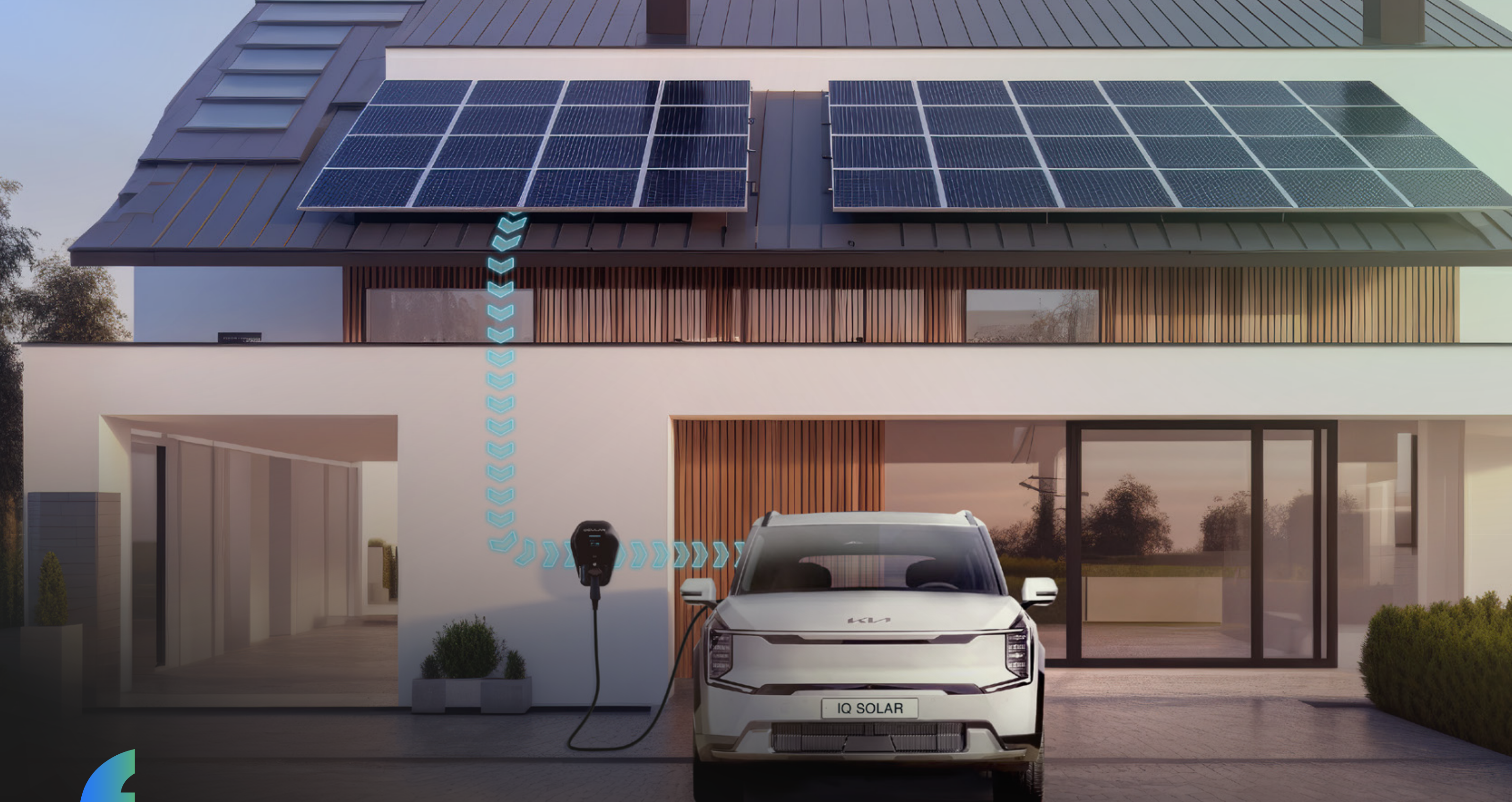
RFID Compatibility



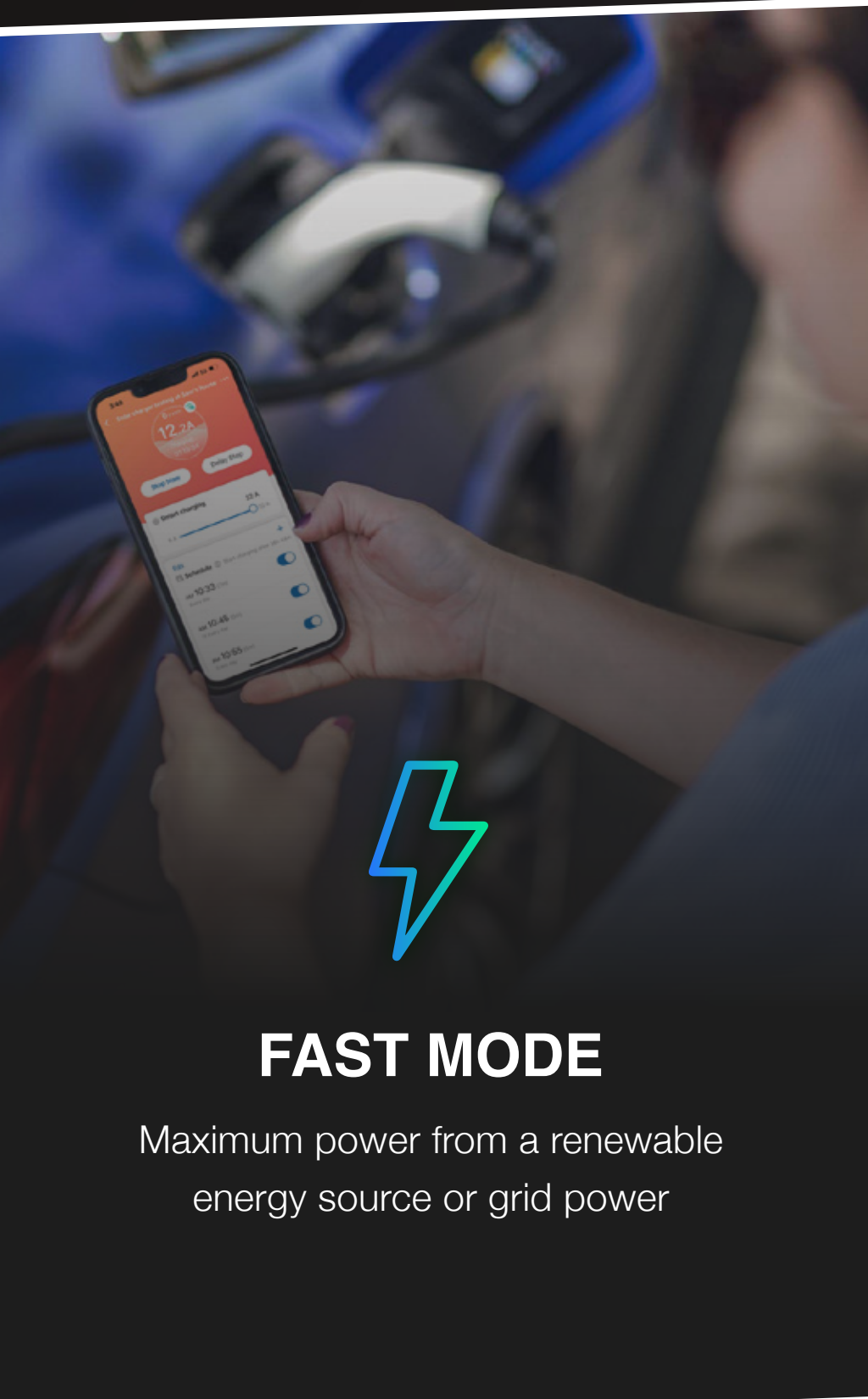
OCPP App



Solar Capability

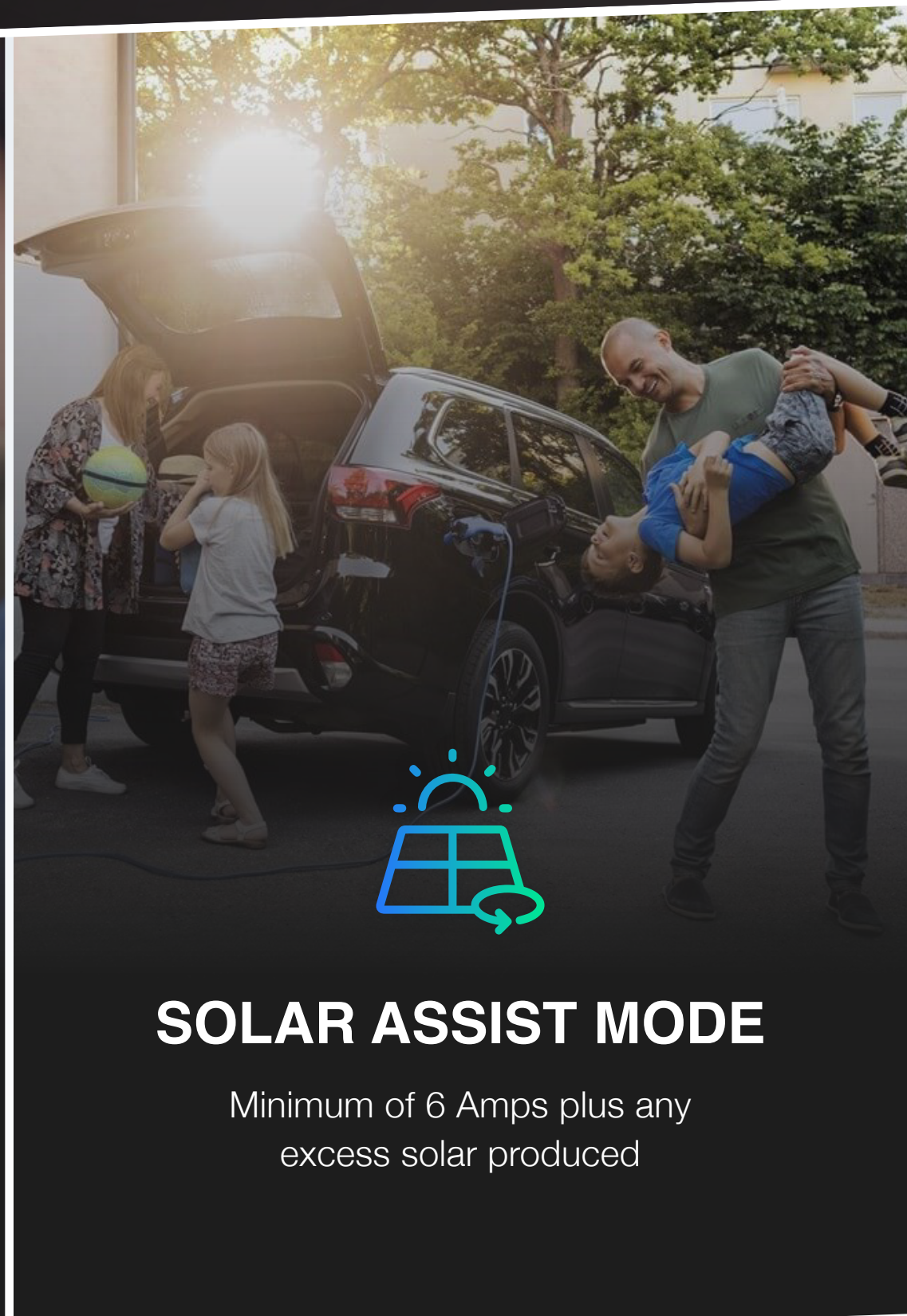


Harness the greenest energy with solar and load management capabilities.



FAST MODE

Maximum power from a renewable energy source or grid power



SOLAR ASSIST MODE

Minimum of 6 Amps plus any excess solar produced



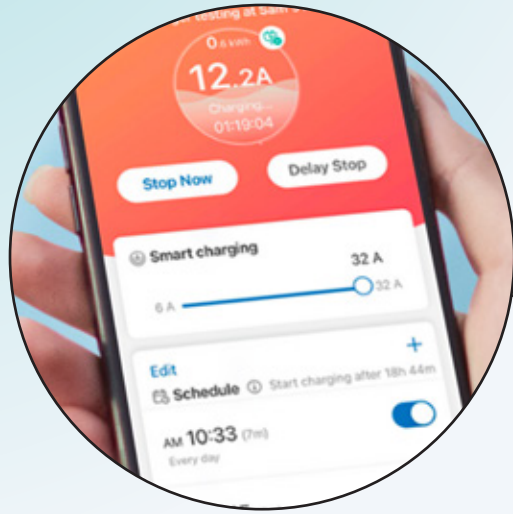
SOLAR ONLY MODE

Charges only when excess solar power is produced

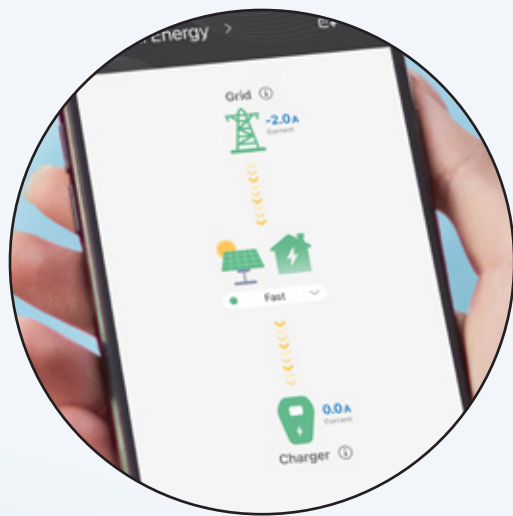


Designed to create enduring value for Australian homes offering flexibility and efficiency while combining advanced technology with user-friendly features.

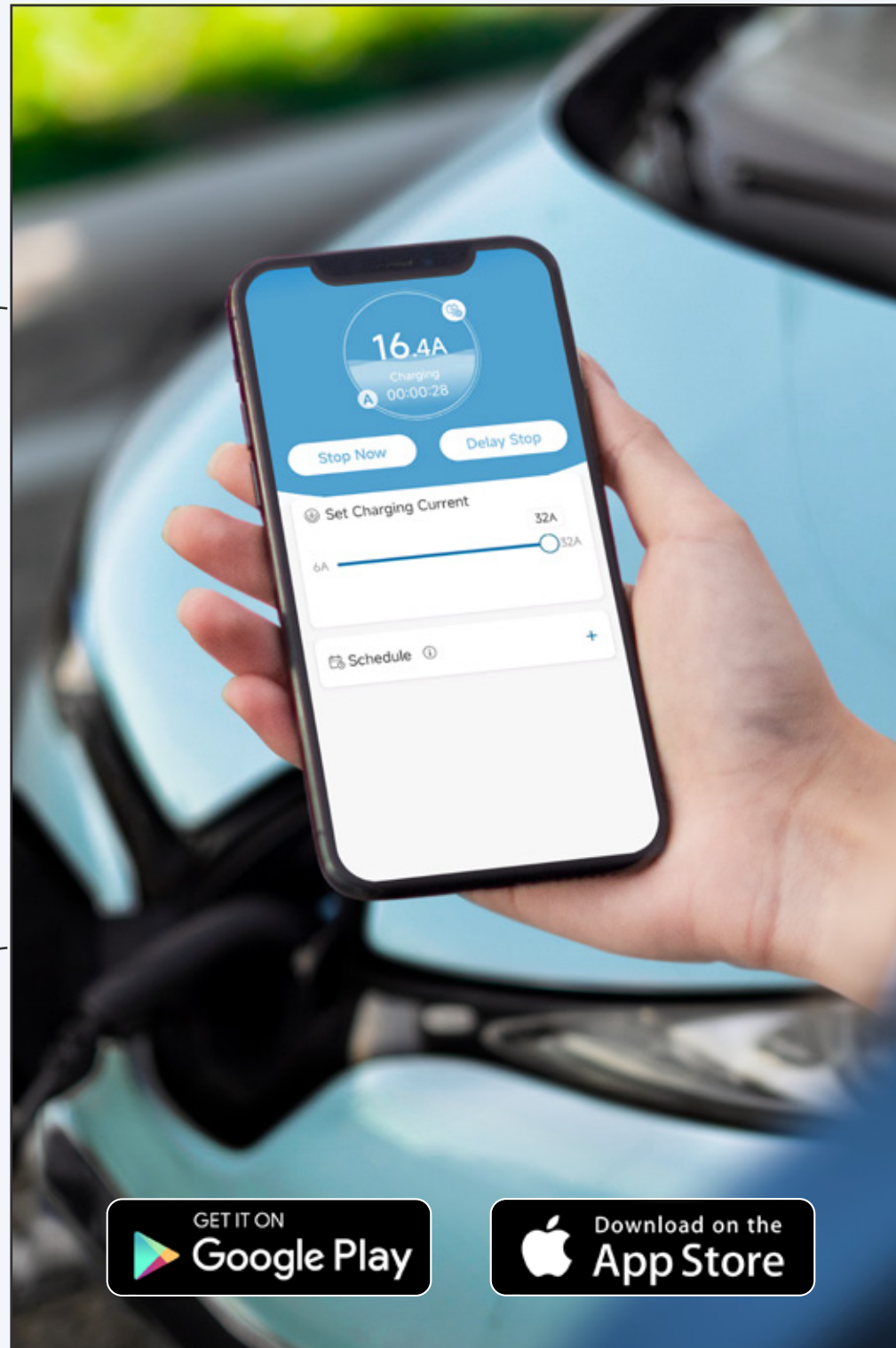
OCULAR SMART HOME APP



Initiate and schedule charging sessions



Solar power consumption monitoring



Intelligent charging with Ocular app



Charging session history

With OCPP 1.6 and 2.0.1 capability, the IQ Solar seamlessly integrates with your phone for real-time monitoring and analysis.



Reduce your installation and energy costs with solar and load balancing functionality.

OCULAR IQ SOLAR

DATASHEET

Model Number	IOCAW13-7S	IOCAW13-7T	IOCAW13-22S	IOCAW13-22T
Power Output	7.2kW (1- Phase)		22kW (3- Phase)	
Charging Connector	Type-2 Socket	5m Type-2 Cable	Type-2 Socket	5m Type-2 Cable
Display	2.8" LCD Screen + LED indication lights			
Current Transformers Included	1		3	
Current Transformer Specifications	20m cable, Fits 16mm diameter cable up to 100A max current			
Input Voltage & Current	230V± 20%, 32A per phase			
Frequency (Hz)	50/60Hz			
Output Voltage	230V ± 20%		400V ± 20%	
Output Current	32A MAX per phase			
User Interaction	Mobile App, Physical button, RFID			
Operating Temperature	-30°C to +55°C in operation			
Storage Temperature	-40°C to +75°C in storage			
Working Humidity	5% - 95% relative humidity, non-condensing			
IP Performance	IP55			
Internal RCD	30mA AC & 6mA DC Leakage			
Electrical Protection	Over current, Short circuit, Over voltage, Under voltage, Ground fault, Lightning surge, Over temperature			
Energy Meter	MID Meter			
Internet Connection	Ethernet, Wi-Fi			
Mounting	Wall Mount / Pole Mount			
Dimension (H x W x D, mm)	380 x 288 x 160 mm			
Net Weight	4.3 kg	7.8 kg	5.4 kg	8.1 kg
Recommended Cable Size (50m run)	10mm ² 2C+E		10mm ² 4C+E	
Recommended Circuit Breaker	40A single phase type A RCBO			
Certification	CE, IEC /EN 61851-1, IEC 61008-1-A1, IEC 62955-1-A1, IEC/EN 61851-21-2, RCM			
Warranty	2 years			

POWERING THE JOURNEYS OF AUSTRALIA



2500+

homes enabled
with ev charging



65+

electric vehicle
variants compatible



\$150K+

cumulative
cost savings



OCULAR

Charging ahead, powering tomorrow.

